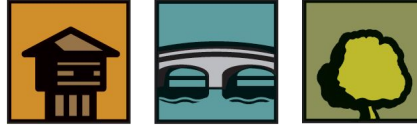


SCHOOL DISTRICT OF



F O R T • A T K I N S O N

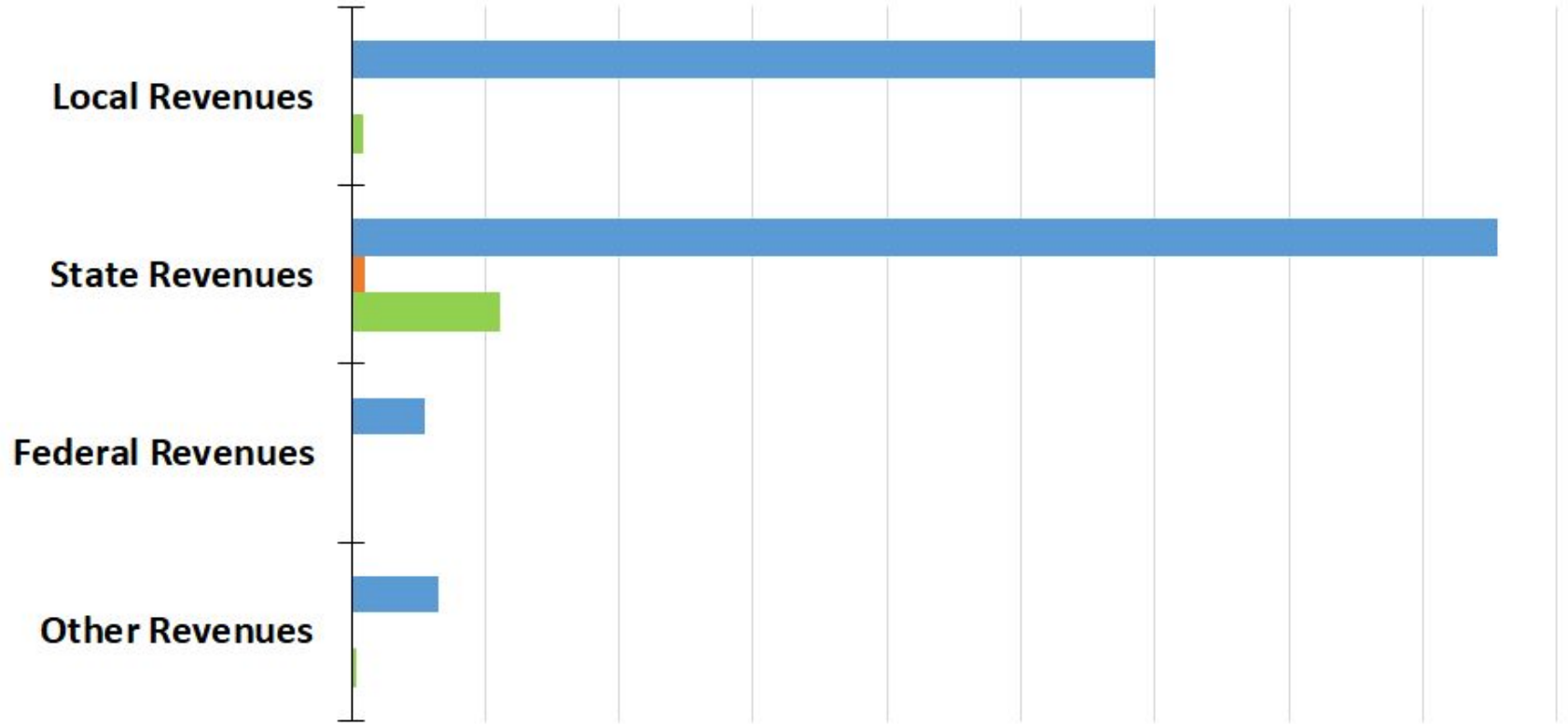
Treasurer's Report

November 30, 2019



2019-20 SDFA Revenues by Type (Millions) (Funds 10 & 27)

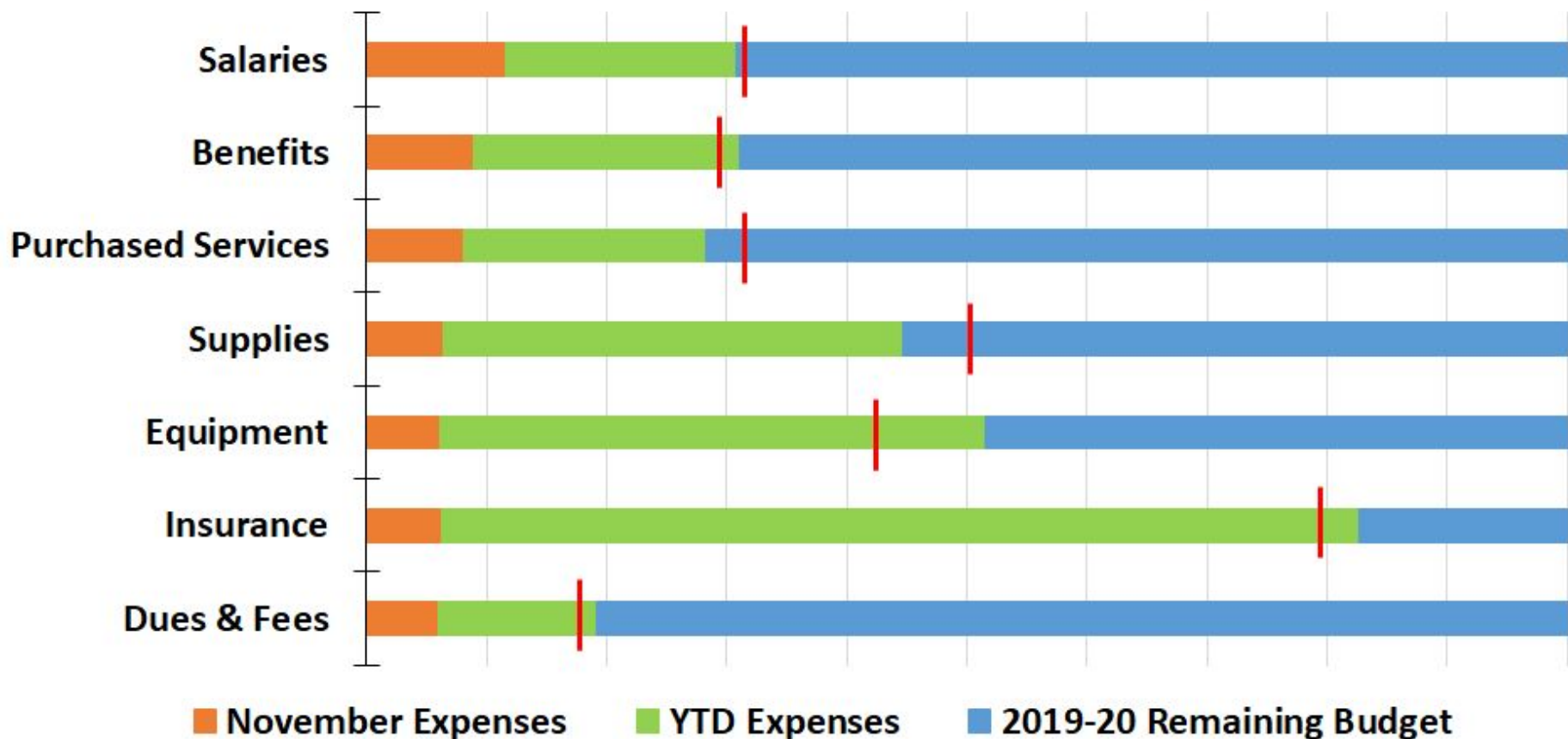
\$- \$3 \$5 \$8 \$10 \$13 \$15 \$18 \$20 \$23



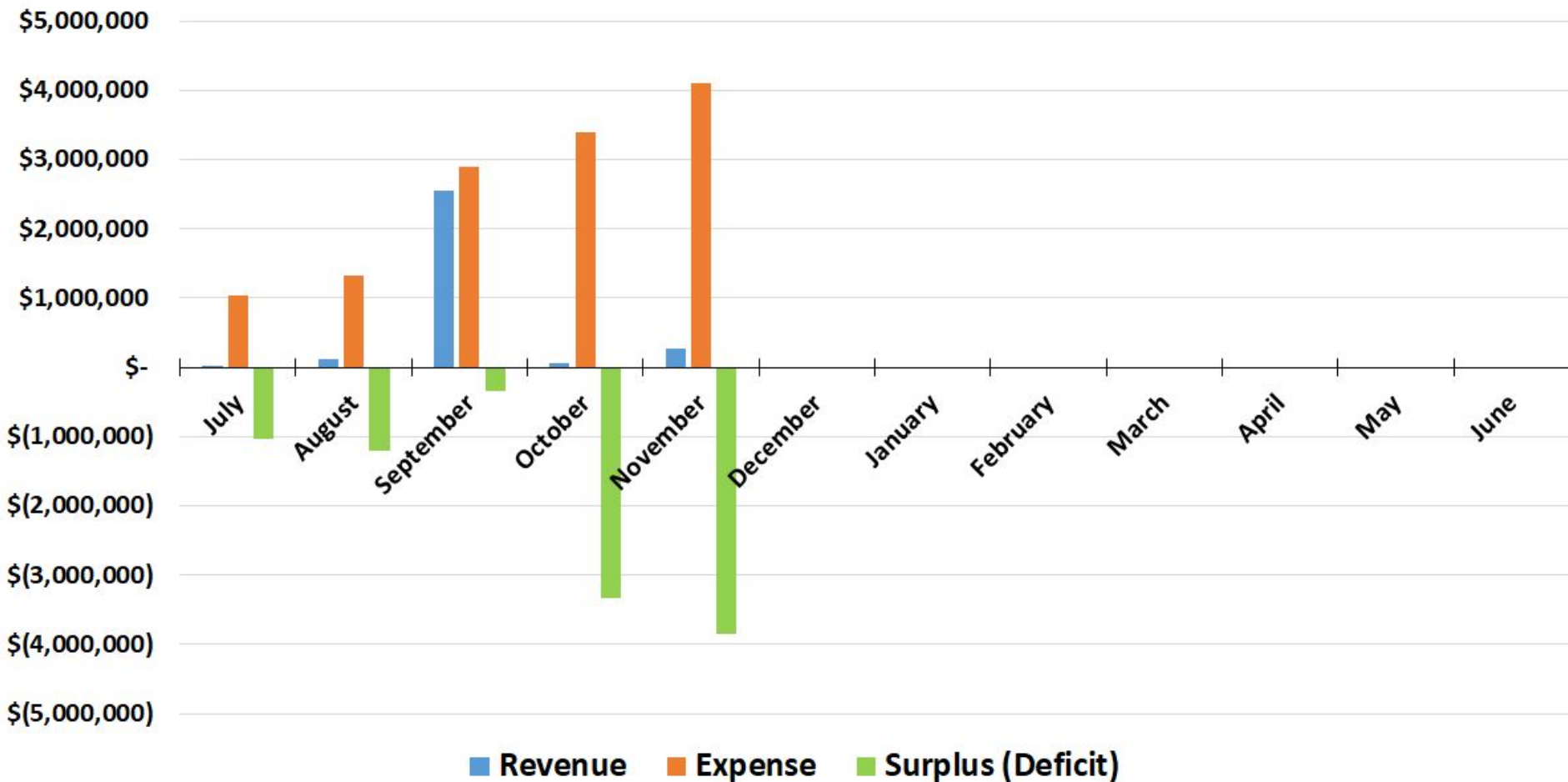
■ 2019-20 Budget ■ November Revenue ■ YTD Revenue

2019-20 SDFA Expenditures by Type (Funds 10 & 27)

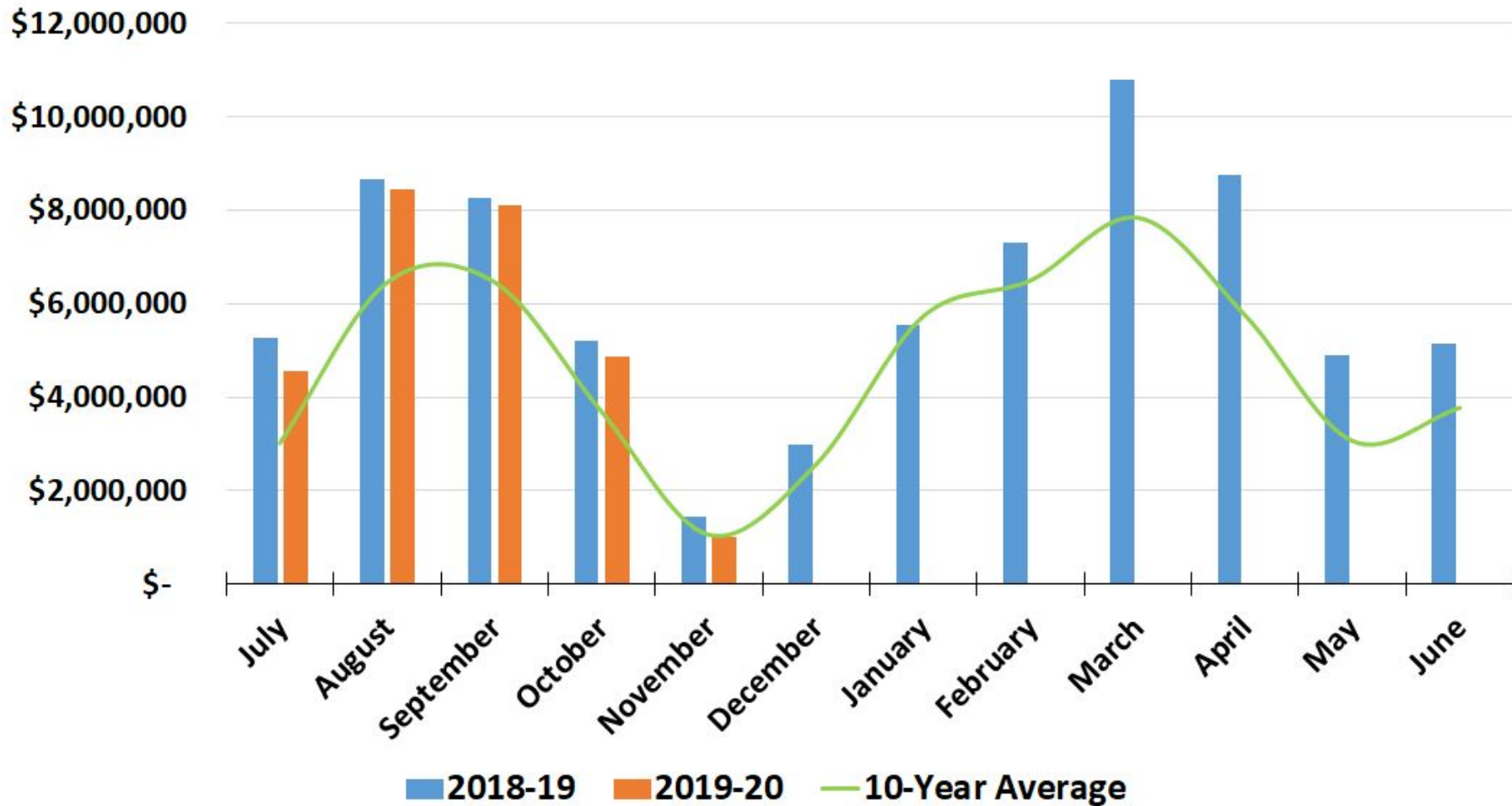
0% 10% 20% 30% 40% 50% 60% 70% 80% 90% 100%



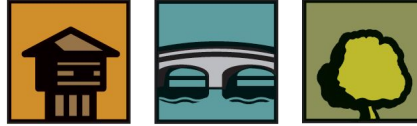
2019-20 SDFA Monthly Operations (Funds 10 & 27)



SDFA Operating Balances (Cash on Hand) (Funds 10 & 27)



SCHOOL DISTRICT OF



F O R T • A T K I N S O N

Treasurer's Report

November 30, 2019

