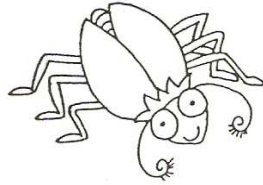
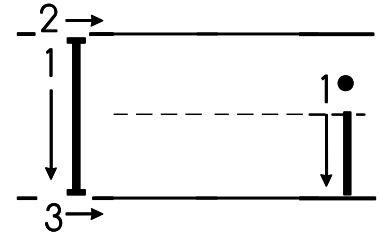


Name \_\_\_\_\_

I i



down,  
across,  
across



Two sets of handwriting practice lines. Each set consists of a solid top line, a dashed middle line, and a solid bottom line. The first set has a solid uppercase 'I' at the beginning, followed by four dashed uppercase 'I's for tracing. The second set has four dashed uppercase 'I's for tracing. A small square box is located at the end of the second set of lines.

I is for insect.

