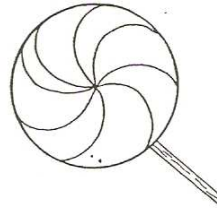
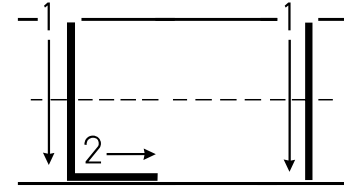


Name \_\_\_\_\_



down,  
slide



Two rows of handwriting practice lines. Each row consists of four boxes. The first box in each row contains a solid uppercase 'L' and a solid lowercase 'l'. The remaining three boxes in each row are empty, with a small dot on the top line to indicate the starting point for writing. A small square box is located at the end of the second row.

L is for lollipop.

