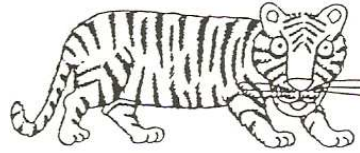
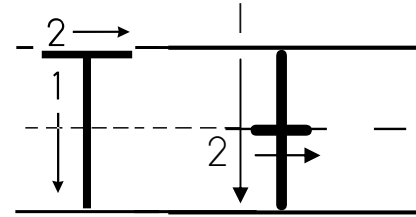


Name \_\_\_\_\_

T t



down,  
across



Two rows of handwriting practice lines. Each row consists of a solid top line, a dashed middle line, and a solid bottom line. The first row contains four uppercase 'T's, each with a dot above it indicating the starting point for the first stroke. The second row contains four uppercase 'T's, each with a dot above it indicating the starting point for the first stroke. A small square box is located at the end of the second row.

T is for tiger.

