
NOTICE

The regular meeting of the Board of Education of the School District of Fort Atkinson will be held on Thursday, November 21, 2019, at 6:30 p.m., at Luther Administration Center, 201 Park Street, Fort Atkinson, Wisconsin. Among the items to be considered, in addition to its regular business, the Board will:

- Receive Comments from Audience;
- Consider Consent Agenda: Minutes, Course Proposals, School Safety Drill Reports, Budget Transfers, Board Personnel Committee Minutes, Employee Handbook Language Changes, Board Finance and Operations Committee Minutes, Gifts to the School District, Personnel Request; and Payment of District Bills;
- Receive Report on State of Wisconsin Report Cards;
- Receive Referendum Survey Results;
- Discuss Palmyra-Eagle School District Dissolution;
- Receive School Mental Health Services Report;
- Receive Election Timeline;
- Receive Treasurer’s Report;
- Receive WASB and CESA 2 Reports and consider Legislative Advocacy; and,
- Consider consider a resolution to go into closed session for the purpose of considering employment of specific administrative employees and to discuss the same with legal counsel as authorized by Section 19.85 (1) (c), (f), and (g) in Wisconsin Statues.

The public is invited and encouraged to attend.

Dick Schultz, Clerk
SCHOOL DISTRICT OF FORT ATKINSON

If you require special accommodations to fully participate, please notify the School District office by telephone (920) 563-7807 or in writing 24 hours prior to the meeting time.

ORDER OF BUSINESS FOR REGULAR MEETING

November 21, 2019
6:30 PM

Luther Administration Center
201 Park Street
Fort Atkinson, Wisconsin 53538

Mission Statement

The School District of Fort Atkinson is committed to delivering the quality opportunities and services each student needs to achieve his or her academic and personal potential

AGENDA

I. CALL TO ORDER

- A. Meeting Will be Called to Order by President Mark Chaney
- B. Roll Call Will be Taken
- C. Pledge of Allegiance
- D. Reading of Mission Statement

II. RECOGNITIONS AND HIGHLIGHTS

- A. **Recognition of Luther Art Gallery Students and Staff** - The Board of Education will recognize Luther Art Gallery students and staff.
- B. **Recognition of Art Educator of the Year Susie Belzer** - The Board of Education will recognize Wisconsin Art Education Associations's Elementary Art Educator of the Year recipient Susie Belzer.
- C. **Recognition of Cross Country State Qualifier** - The Board of Education will recognize cross country state qualifier Jenna Lovejoy and coaches Chick Westby, Chris Reed, Megan Agnew, and Hayden Hoffmann.
- D. **Recognition of Rotary Educator-of-the-Month** - The Board of Education will recognize Rotary Educator-of-the-Month Emily Bouvier from Luther Elementary.

III. COMMENTS FROM THE AUDIENCE ON AGENDA AND NONAGENDA ITEMS

- ### IV. CONSENT AGENDA
- Robert's Rules provide for a consent agenda listing several items for approval of the Board by a single motion. Documentation concerning these items has been provided to all Board members in advance to assure an extensive and thorough review and will become part of the permanent record. Items may be removed from the consent agenda at the request of any Board member.

- A. Minutes - Regular meeting dated October 28, 2019

- B. Course Proposals - Social Studies 6, Social Studies 7, Chemistry I, Earth Science I, Physics I, Biology I, Genetics, Cell Biology, Chemistry II, Accelerated Chemistry II, AP Chemistry, Astronomy, Geology, Physics II, Conceptual Physics, AP Physics, and Ecology
- C. School Safety Drill Reports
- D. Budget Transfers
- E. Board Personnel Committee Minutes
 - 1. Employee Handbook Language Changes
 - a. Certified - Section 7. Educator Supervision and Evaluation, 7.01 General Supervision/Evaluation
 - b. Administrative - Section 11. Reimbursable Absences, 11.01 Yearly Increments, Limits and Usage
 - c. Certified - Section 12. Reimbursable Absences, 12.01 Yearly Increments, Limits and Usage
 - d. Support Staff - Section 14. Reimbursable Absences, 12.01 Yearly Increments, Limits and Usage
 - e. Support Staff - Section 20. Employee Benefits, 20.06 Health Insurance
- F. Board Finance and Operations Committee Minutes
- G. Gifts to the School District
 - 1. Monetary donation from Badger Bank to Fort Family Connections - \$1,835.40
 - 2. Donation of winter coats and snow pants from The Forester Group to Luther Elementary - \$2,000
- H. Personnel Requests
 - 1. Resignation of Kelley Dembski
- I. Payment of District Bills

Motion by:	Second by:	Roll Call:
------------	------------	------------

V. INSTRUCTION

- A. Report on State of Wisconsin Report Cards** - Director of Instruction Amy Oakley will present a report on the District report cards from the State of Wisconsin.

VI. NONINSTRUCTION

- A. Referendum Survey Results** - Mr. Joe Donovan, of Donovan Group LLC, will present the results from the referendum survey.
- B. Palmyra-Eagle School District Dissolution** - The Board may wish to discuss the dissolution of the Palmyra-Eagle School District.
- C. School Mental Health Services Report** - Director of Special Education and Pupil Services Lisa Hollenberger will present a report on school mental health services and supports.
- D. Election Timeline** - Board Clerk Dick Schultz will review the timelines and procedure for filing papers for seeking election to the Board of Education.

VII. TREASURER’S REPORT - Financial Report by the Treasurer

VIII. WASB REPORT / CESA REPORTS / LEGISLATIVE ADVOCACY

IX. ITEMS FOR FUTURE BOARD MEETINGS

- A. Strategic Plan Update
- B. Focus Group Feedback
- C. Financial Projection
- D. Approval of 4K provider contracts
- E. School safety drill reports
- F. Audit report approval
- G. Election timeline review

X. CLOSED SESSION/ADJOURNMENT - The Board of Education may wish to consider one of the following resolutions:

BE IT RESOLVED that the Board of Education convene in closed session for the purpose of considering employment of specific administrative employees and to discuss the same with legal counsel as authorized by Section 19.85 (1) (c), (f), and (g) in Wisconsin Statutes.

Motion by:	Second by:	Roll Call:
------------	------------	------------

BE IT RESOLVED that the Board of Education adjourn.

Motion by:	Second by:	Voice Vote:
------------	------------	-------------

Respectfully submitted,

Dr. Rob Abbott
Interim Superintendent of Schools

Comments for Treasurer

November 21, 2019

1. Tonight I will be sharing our financial position through October 31st. More detail is available on our website and you had some more detailed reports in your Board packet.
2. We will start by looking at our operating revenues.
 - a. These revenues include those in the General Fund, Fund 10, as well as those in the Special Education Fund, Fund 27.
 - b. The orange bars represent October revenue...which we see none of here. In fact we only received about \$56,500 in total revenue during the month of October. This definitely impacted our monthly position and operating balance, which we will see shortly.
3. The next chart shows the operating expenditures by type.
 - a. The total budget for each type of expense is shown here. The markers for each major expense item illustrate the percentage of the budget spent through the same time last year for these categories.
 - b. As you can see, at this point in the fiscal year we are pretty much in line with the percentage of budgets expended at the same time last year. We are a little over in benefits, but that is a result of our first HSA deposit for our new health plan already occurring this year.
4. Our third graph shows the monthly operating revenues in blue, the monthly operating expenses in orange, and the monthly operating surplus or deficit in green. You can see that because of the very little revenue we received in October, we ended up with a deficit of over \$3.3 million.
5. This final graph shows the monthly operating balance. On the last slide I mentioned the large deficit, and as a result, you can see that our operating balance started its annual downward slide. We will continue this trend until the beginning of December when we get our next state aid payment. Then we will start to increase our operating balance as tax revenue comes in during the first couple of months of the new calendar year.
6. That concludes the treasurer's report for October, 2019 unless there are any questions.

SCHOOL DISTRICT OF



F O R T • A T K I N S O N

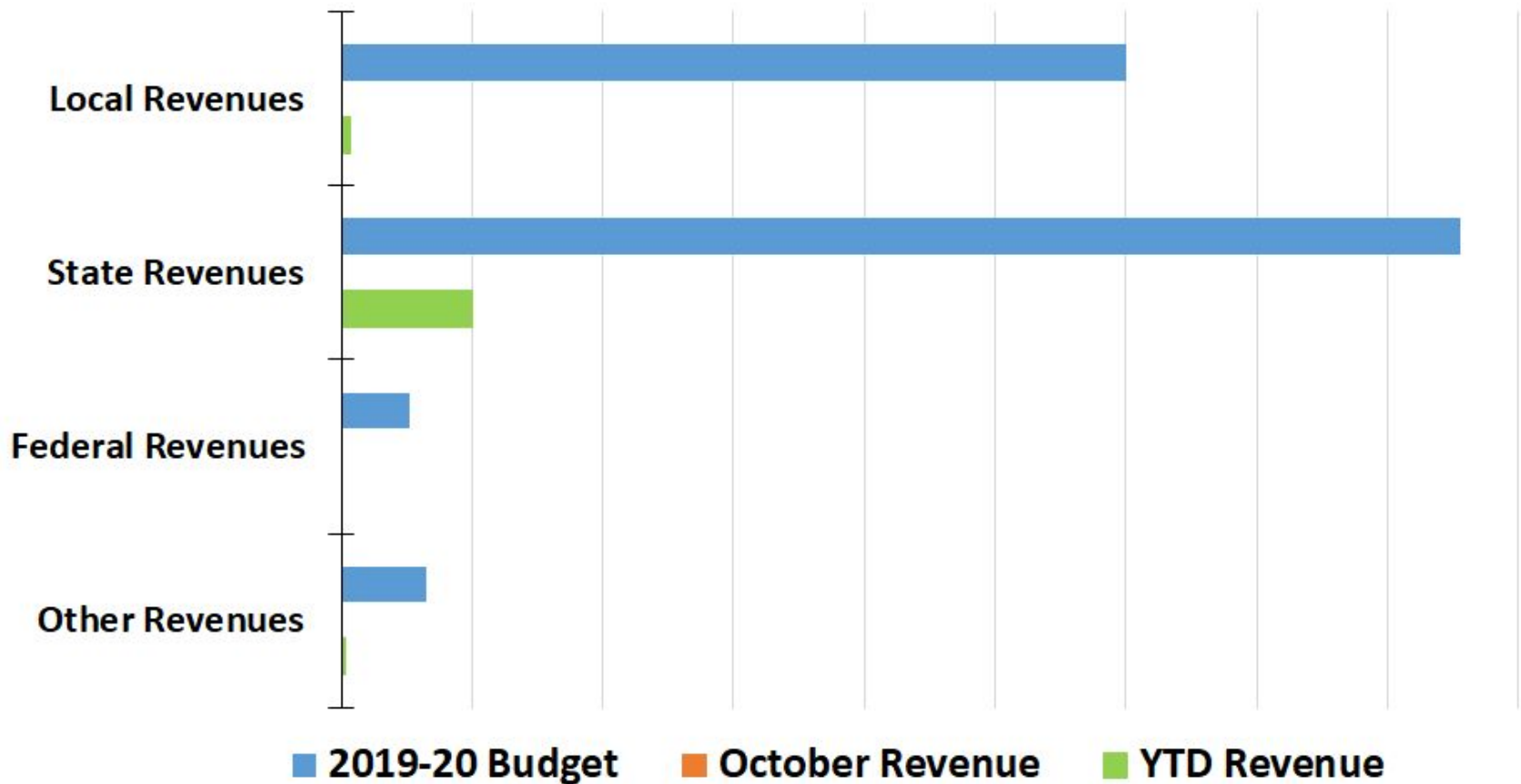
Treasurer's Report

October 31, 2019



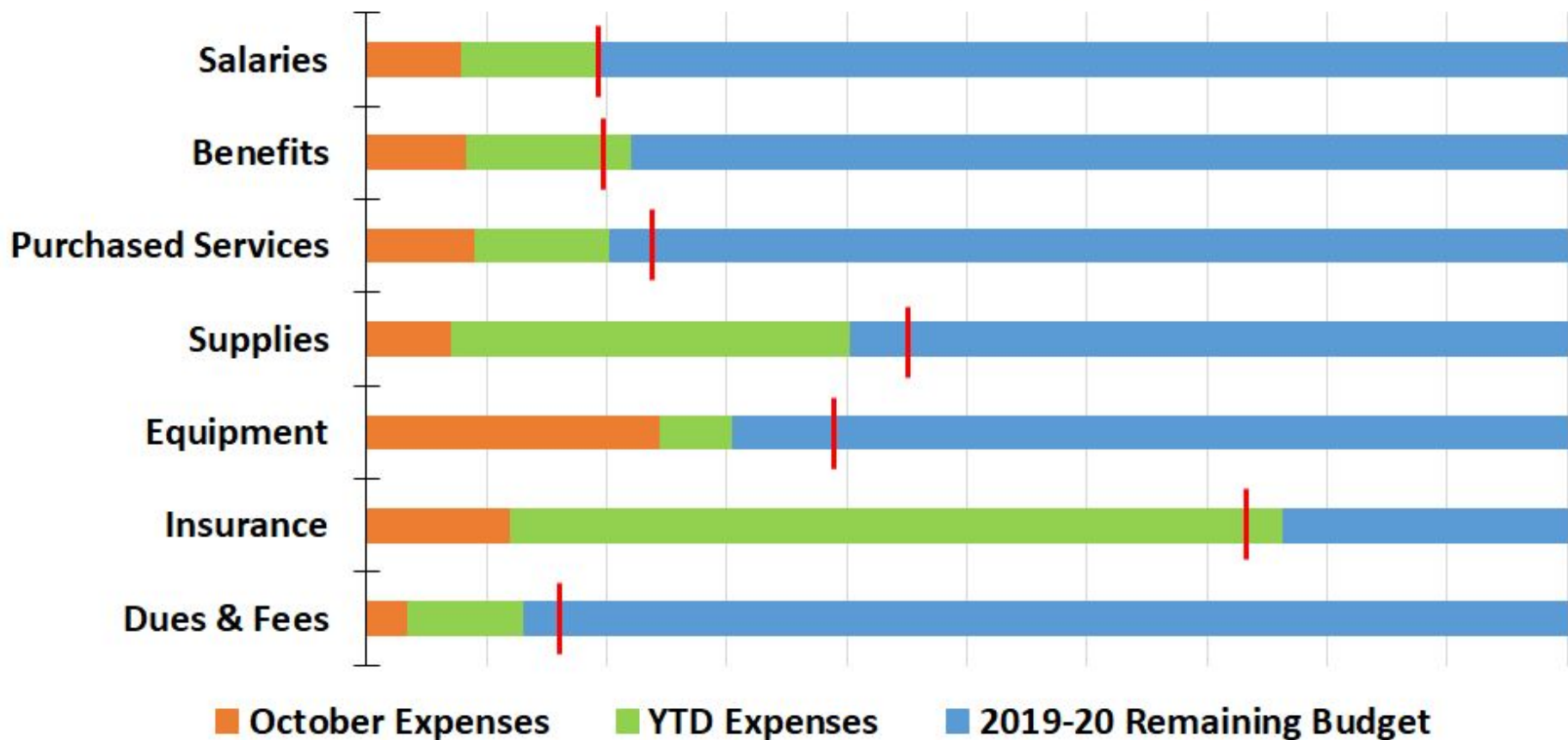
2019-20 SDFA Revenues by Type (Millions) (Funds 10 & 27)

\$- \$3 \$5 \$8 \$10 \$13 \$15 \$18 \$20 \$23

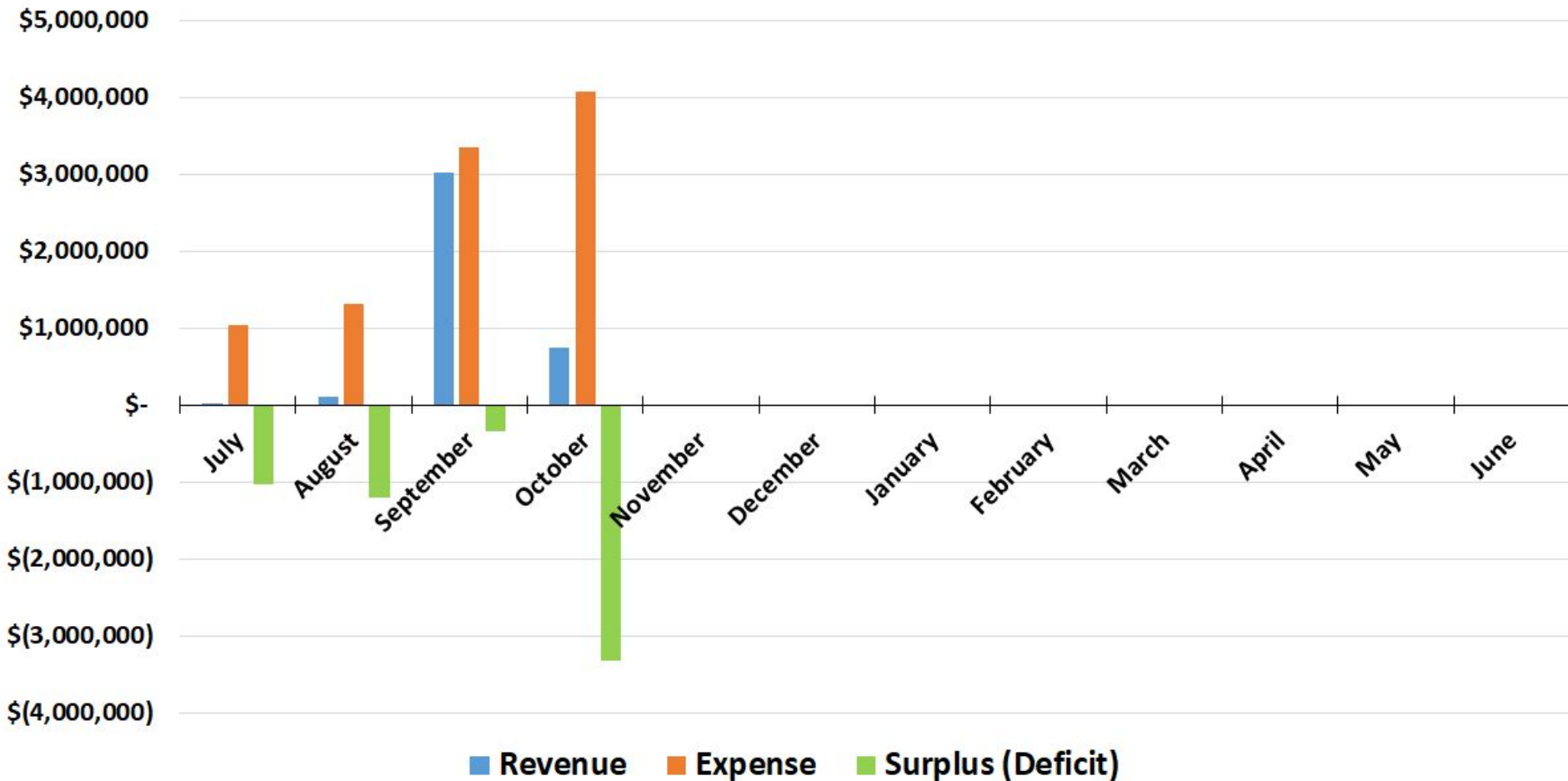


2019-20 SDFA Expenditures by Type (Funds 10 & 27)

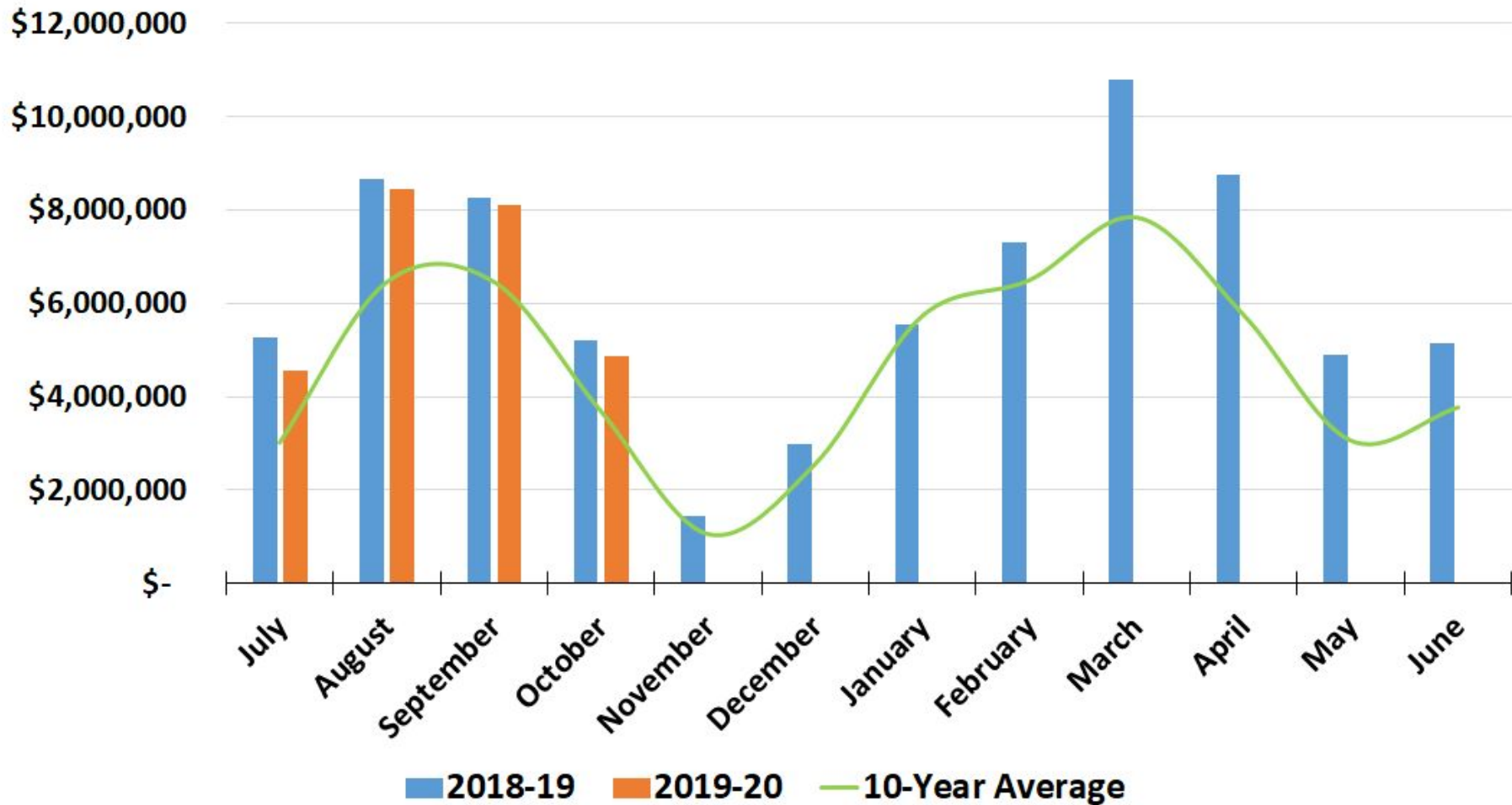
0% 10% 20% 30% 40% 50% 60% 70% 80% 90% 100%



2019-20 SDFA Monthly Operations (Funds 10 & 27)



SDFA Operating Balances (Cash on Hand) (Funds 10 & 27)



SCHOOL DISTRICT OF



F O R T • A T K I N S O N

Treasurer's Report

October 31, 2019



Fnd	Description	Source	2019-20	2019-20	October 2019-20	2019-20	2019-20	2018-19
			Original Budget	Revised Budget	Monthly Activity	FYTD Activity	FYTD%	FYTD%
10	TRANSFER FRM FUND 95	195	0.00	0.00	0.00	0.00	0.00%	0.00%
10	TAXES (CURRENT YEAR)	211	14,724,679.00	14,724,679.00	0.00	0.00	0.00%	0.00%
10	PROP.TAX CHARGEBACKS	212	37.00	37.00	0.00	0.00	0.00%	0.00%
10	GEN.TUITION-INDIV.PD	241	0.00	0.00	0.00	0.00	0.00%	0.00%
10	FOOD SERVICE SALES - PUPIL	251	0.00	0.00	0.00	0.00	0.00%	0.00%
10	SUPPLY RESALES	262	0.00	0.00	388.66	6,392.80	0.00%	0.00%
10	ADMISSIONS RECEIPTS	271	31,193.00	31,193.00	6,276.00	17,451.00	55.95%	42.89%
10	OTH SCH ACTIV INCOME	279	39,545.00	39,545.00	2,550.00	25,449.00	64.35%	65.79%
10	INTEREST ON INVEST.	280	103,280.00	103,280.00	8,941.62	48,347.15	46.81%	43.49%
10	RECEIPTS FROM GIFTS	291	3,299.00	3,299.00	95.50	698.31	21.17%	0.00%
10	STUDENT FEES	292	99,089.00	99,089.00	4,676.00	80,061.00	80.80%	84.49%
10	REVENUE FROM RENTALS	293	11,391.00	11,391.00	509.00	3,173.00	27.86%	30.42%
10	SUMMER SCHOOL REVENU	295	0.00	0.00	0.00	0.00	0.00%	0.00%
10	STUDENT FINES	297	500.00	500.00	15.00	220.00	44.00%	10.67%
10	NON-SE AID TRANSIT	315	8,375.00	8,375.00	0.00	0.00	0.00%	0.00%
10	TRANSIT OF FED. AIDS	317	0.00	0.00	0.00	0.00	0.00%	0.00%
10	BASE TUITION - NON-OE	341	0.00	0.00	846.26	846.26	0.00%	0.00%
10	OPEN ENROLL. TUITION	345	1,340,267.00	1,340,267.00	0.00	0.00	0.00%	0.00%
10	OTH INTER-DIS TRF WI	390	0.00	0.00	0.00	0.00	0.00%	0.00%
10	STATE GRANT VIA CESA	515	0.00	0.00	0.00	0.00	0.00%	0.00%
10	STATE TRANSPORT. AID	612	17,000.00	17,000.00	0.00	0.00	0.00%	0.00%
10	STATE LIBRARY AID	613	100,000.00	100,000.00	0.00	0.00	0.00%	0.00%
10	OTHER STATE AID	619	0.00	0.00	0.00	619.33	0.00%	0.00%
10	STATE EQUALIZ. AID	621	17,111,972.00	17,111,972.00	0.00	2,493,870.00	14.57%	14.58%
10	SPECIAL PROJ. GRANTS	630	29,726.00	29,726.00	425.00	425.00	1.43%	0.00%
10	ST.REV.THRU.LOC.GOV.	660	3,000.00	3,000.00	0.00	0.00	0.00%	0.00%
10	TAX EXEMPT COMP. AID	691	117,159.00	117,159.00	0.00	0.00	0.00%	0.00%
10	PER PUPIL AID	695	2,036,048.00	2,036,048.00	0.00	0.00	0.00%	0.00%
10	OTHER STATE REVENUES	699	102,073.00	102,073.00	0.00	0.00	0.00%	0.00%
10	ARRA SFS FUNDS	718	0.00	0.00	0.00	0.00	0.00%	0.00%
10	OTH.FED.PMT.LIEU TAX	729	0.00	0.00	0.00	0.00	0.00%	0.00%
10	SPECIAL PROJ. GRANTS	730	172,388.00	172,388.00	0.00	0.00	0.00%	2.15%
10	IASA - TITLE 1	751	313,319.00	313,319.00	0.00	0.00	0.00%	0.00%
10	IASA - TITLE 6	752	0.00	0.00	0.00	0.00	0.00%	0.00%
10	FEDERAL AID THRU STATE OF WI	780	0.00	0.00	0.00	0.00	0.00%	0.00%
10	SALE/LOSS FIX.ASSETS	860	0.00	0.00	0.00	0.00	0.00%	0.00%
10	EQUIPMENT SALES	861	0.00	0.00	107.95	738.85	0.00%	0.00%
10	LAND AND REAL PROPERTY SALES	862	0.00	0.00	0.00	0.00	0.00%	0.00%
10	OTHER SALES/LOSSES	869	0.00	0.00	0.00	0.00	0.00%	0.00%
10	OTHER ADJUSTMENTS	969	0.00	0.00	0.00	0.00	0.00%	0.00%
10	REFUND OF PRIOR YEAR EXPENSE	971	233,500.00	233,500.00	31,295.48	50,595.16	21.67%	43.95%
10	REFUND (NON-AIDABLE)	972	0.00	0.00	0.00	0.00	0.00%	0.00%
10	MEDICAID SCH.SERVICE	981	0.00	0.00	0.00	0.00	0.00%	0.00%
10	MISC. REVENUES	990	17,575.00	17,575.00	370.00	7,728.00	43.97%	49.12%
10	GENERAL FUND	---	36,615,415.00	36,615,415.00	56,496.47	2,736,614.86	7.47%	7.49%
21	RECEIPTS FROM GIFTS	291	20,175.00	20,175.00	875.00	20,930.00	103.74%	634.91%
21	OTHER ADJUSTMENTS	969	0.00	0.00	0.00	0.00	0.00%	0.00%
21	MISC. REVENUES	990	0.00	0.00	0.00	0.00	0.00%	0.00%
21	SPECIAL REVENUE TRUST FUND	---	20,175.00	20,175.00	875.00	20,930.00	103.74%	634.91%
22	RECEIPTS FROM GIFTS	291	0.00	0.00	39,660.25	83,997.02	0.00%	0.00%
22	DISTRICT ACTIVITY ACCOUNT	---	0.00	0.00	39,660.25	83,997.02	0.00%	0.00%

Fnd	Description	Source	2019-20	2019-20	October 2019-20	2019-20	2019-20	2018-19
			Original Budget	Revised Budget	Monthly Activity	FYTD Activity	FYTD%	FYTD%
27	TRANSFER FRM FUND 10	110	5,096,653.00	5,096,653.00	685,178.54	1,300,387.08	25.51%	0.00%
27	RECEIPTS FROM GIFTS	291	0.00	0.00	0.00	0.00	0.00%	0.00%
27	TRANSIT OF STATE AID	316	0.00	0.00	0.00	0.00	0.00%	0.00%
27	SPED CONTRACTED INSTRUCTION	346	0.00	0.00	0.00	0.00	0.00%	0.00%
27	SP.ED.OPEN ENROLMENT	347	0.00	0.00	0.00	0.00	0.00%	0.00%
27	HNDCPD. AID VIA CESA	516	10,551.00	10,551.00	0.00	0.00	0.00%	0.00%
27	TRANSIT OF FED. AIDS	517	0.00	0.00	0.00	0.00	0.00%	0.00%
27	HANDICAPPED AID	611	1,702,718.00	1,702,718.00	0.00	0.00	0.00%	0.00%
27	HIGH COST SP.ED. AID	625	175,000.00	175,000.00	0.00	0.00	0.00%	0.00%
27	AID - SPEC ED TRANSITION GRNT	697	0.00	0.00	0.00	0.00	0.00%	0.00%
27	HIGH COST SP.ED. AID	711	47,000.00	47,000.00	0.00	0.00	0.00%	0.00%
27	SPECIAL PROJ. GRANTS	730	501,919.00	501,919.00	0.00	0.00	0.00%	0.00%
27	FEDERAL AID THRU STATE OF WI	780	275,000.00	275,000.00	0.00	0.00	0.00%	0.00%
27	SPECIAL ED. & RELATED SERVICES	---	7,808,841.00	7,808,841.00	685,178.54	1,300,387.08	16.65%	0.00%
38	TRANSFER FRM FUND 10	110	0.00	0.00	0.00	0.00	0.00%	0.00%
38	TAXES (CURRENT YEAR)	211	0.00	0.00	0.00	0.00	0.00%	0.00%
38	INTEREST ON INVEST.	280	0.00	0.00	0.00	0.00	0.00%	0.00%
38	LONG-TERM LOANS	873	0.00	0.00	0.00	0.00	0.00%	0.00%
38	NON-REFERENDUM DEBT SERVICE	---	0.00	0.00	0.00	0.00	0.00%	0.00%
39	TAXES (CURRENT YEAR)	211	2,469,127.00	2,469,127.00	0.00	0.00	0.00%	0.00%
39	INTEREST ON INVEST.	280	15,000.00	15,000.00	1,602.36	7,645.30	50.97%	132.49%
39	LONG-TERM BONDS	875	0.00	0.00	0.00	0.00	0.00%	0.00%
39	PREM/ACRUED INTEREST	879	0.00	0.00	0.00	0.00	0.00%	0.00%
39	PREMIUM/ACRUED INT.	968	0.00	0.00	0.00	0.00	0.00%	0.00%
39	MISC. REVENUES	990	0.00	0.00	0.00	0.00	0.00%	0.00%
39	REFERENDUM APPROVED DEBT	---	2,484,127.00	2,484,127.00	1,602.36	7,645.30	0.31%	0.17%
46	TRANSFER FRM FUND 10	110	0.00	0.00	0.00	0.00	0.00%	0.00%
46	INTEREST ON INVEST.	280	4.00	4.00	0.31	1.23	30.75%	123.00%
46	LONG-TERM CAPITAL IMPROVEMENT	---	4.00	4.00	0.31	1.23	30.75%	123.00%
50	TRANSFER FRM FUND 10	110	0.00	0.00	0.00	0.00	0.00%	0.00%
50	FOOD SERVICE SALES - PUPIL	251	515,256.00	515,256.00	56,514.07	155,084.12	30.10%	28.81%
50	FOOD SERVICE SALES - ADULT	252	7,797.00	7,797.00	0.00	0.00	0.00%	0.00%
50	OTH FOOD SRVC SALES	259	19,830.00	19,830.00	168.75	6,534.58	32.95%	26.34%
50	INTEREST ON INVEST.	280	600.00	600.00	0.00	0.00	0.00%	0.00%
50	RECEIPTS FROM GIFTS	291	0.00	0.00	0.00	0.00	0.00%	0.00%
50	STATE FOOD SERV. AID	617	21,339.00	21,339.00	0.00	0.00	0.00%	0.00%
50	SPECIAL PROJ. GRANTS	630	0.00	0.00	0.00	0.00	0.00%	0.00%
50	DONATED COMMODITIES	714	72,510.00	72,510.00	0.00	0.00	0.00%	0.00%
50	FED. FOOD SERV. AID	717	551,240.00	551,240.00	38,472.17	38,472.17	6.98%	18.15%
50	SPECIAL PROJ. GRANTS	730	0.00	0.00	0.00	0.00	0.00%	0.00%
50	DIRECT FEDERAL AID	791	0.00	0.00	0.00	0.00	0.00%	0.00%
50	EQUIPMENT SALES	861	0.00	0.00	0.00	0.00	0.00%	0.00%
50	REFUND OF PRIOR YEAR EXPENSE	971	0.00	0.00	0.00	0.00	0.00%	0.00%
50	FOOD SERVICE FUND	---	1,188,572.00	1,188,572.00	95,154.99	200,090.87	16.83%	20.65%
72	INTEREST ON INVEST.	280	2.00	2.00	0.16	0.64	32.00%	74.25%
72	RECEIPTS FROM GIFTS	291	2,000.00	2,000.00	0.00	0.00	0.00%	0.00%
72	UNREALIZED GAINS ON INVESTMENT	957	0.00	0.00	0.00	0.00	0.00%	0.00%

<u>Fnd</u>	<u>Description</u>	<u>Source</u>	<u>2019-20 Original Budget</u>	<u>2019-20 Revised Budget</u>	<u>October 2019-20 Monthly Activity</u>	<u>2019-20 FYTD Activity</u>	<u>2019-20 FYTD%</u>	<u>2018-19 FYTD%</u>
72	EXPENDABLE TRUST FUND	---	2,002.00	2,002.00	0.16	0.64	0.03%	52.93%
73	INTEREST ON INVEST.	280	0.00	0.00	0.00	0.00	0.00%	0.00%
73	CONTRIB.TO TRUST FD.	951	898,147.00	898,147.00	0.00	0.00	0.00%	0.00%
73	OPEB RETIREE CONTRIBUTION	952	86,156.00	86,156.00	0.00	0.00	0.00%	0.00%
73	UNREALIZED GAINS ON INVESTMENT	957	50,000.00	50,000.00	0.00	30,415.30	60.83%	39.86%
73	EMPLOYEE BENEFIT FUND	---	1,034,303.00	1,034,303.00	0.00	30,415.30	2.94%	1.36%
80	TAXES (CURRENT YEAR)	211	0.00	0.00	0.00	0.00	0.00%	0.00%
80	COMMUNITY SERVIC FEE	272	22,000.00	22,000.00	0.00	7,332.20	33.33%	15.51%
80	REFUND OF PRIOR YEAR EXPENSE	971	0.00	0.00	0.00	0.00	0.00%	0.00%
80	COMMUNITY SERVICE	---	22,000.00	22,000.00	0.00	7,332.20	33.33%	15.51%
95	TRANSIT OF FED. AIDS	317	14,253.00	14,253.00	0.00	0.00	0.00%	0.00%
95	SPECIAL PROJ. GRANTS	630	0.00	0.00	0.00	0.00	0.00%	0.00%
95	SPECIAL PROJ. GRANTS	730	0.00	0.00	0.00	0.00	0.00%	0.00%
95	COOP PROGRAMS-FISCAL AGENT	---	14,253.00	14,253.00	0.00	0.00	0.00%	0.00%
Grand Revenue Totals			49,189,692.00	49,189,692.00	878,968.08	4,387,414.50	8.92%	6.82%

Number of Accounts: 355

***** End of report *****

Fnd	Description	Object	2019-20	2019-20	October 2019-20	2019-20	2019-20	2018-19
			Original Budget	Revised Budget	Monthly Activity	FYTD Activity	FYTD%	FYTD%
10	SALARIES AND WAGES	1--	17,212,349.00	17,212,349.00	1,360,921.71	3,449,830.20	20.04%	20.03%
10	EMPLOYEE BENEFITS	2--	8,111,042.00	8,111,042.00	673,413.05	1,885,032.58	23.24%	21.15%
10	PURCHASED SERVICES	3--	5,601,501.00	5,606,526.00	486,517.12	1,195,608.62	21.33%	25.38%
10	NON-CAPITAL OBJECTS	4--	1,137,861.00	1,133,586.00	81,368.87	460,010.94	40.58%	45.16%
10	CAPITAL OBJECTS	5--	205,850.00	205,050.00	52,298.24	65,211.13	31.80%	39.82%
10	DEBT RETIREMENT	6--	475.00	475.00	0.00	0.00	0.00%	0.00%
10	INSURANCE/JUDGMENTS	7--	338,850.00	338,850.00	40,920.15	258,745.27	76.36%	73.35%
10	INTERFUND TRANSFERS	8--	5,096,653.00	5,096,653.00	685,178.54	1,300,387.08	25.51%	0.00%
10	DUES/FEES/MISCL.	9--	188,348.00	188,398.00	6,104.33	25,233.18	13.39%	16.52%
10	GENERAL FUND	---	37,892,929.00	37,892,929.00	3,386,722.01	8,640,059.00	22.80%	19.95%
21	SALARIES AND WAGES	1--	15,500.00	15,500.00	0.00	500.24	3.23%	0.00%
21	EMPLOYEE BENEFITS	2--	0.00	0.00	0.00	71.02	0.00%	0.00%
21	PURCHASED SERVICES	3--	5,850.00	5,850.00	875.46	1,909.87	32.65%	0.00%
21	NON-CAPITAL OBJECTS	4--	2,080.00	2,080.00	85.46	8,316.40	399.83%	114.74%
21	CAPITAL OBJECTS	5--	16,300.00	16,300.00	10,000.00	10,172.00	62.40%	155.26%
21	DUES/FEES/MISCL.	9--	1,500.00	1,500.00	365.00	1,698.50	113.23%	53.83%
21	SPECIAL REVENUE TRUST FUN	---	41,230.00	41,230.00	11,325.92	22,668.03	54.98%	315.00%
22	SALARIES AND WAGES	1--	0.00	0.00	455.00	455.00	0.00%	0.00%
22	EMPLOYEE BENEFITS	2--	0.00	0.00	54.44	54.44	0.00%	0.00%
22	PURCHASED SERVICES	3--	0.00	0.00	2,363.84	4,537.30	0.00%	0.00%
22	NON-CAPITAL OBJECTS	4--	0.00	0.00	20,437.31	53,235.63	0.00%	0.00%
22	CAPITAL OBJECTS	5--	0.00	0.00	0.00	0.00	0.00%	0.00%
22	DUES/FEES/MISCL.	9--	0.00	0.00	1,252.95	9,655.91	0.00%	0.00%
22	DISTRICT ACTIVITY ACCOUNT	---	0.00	0.00	24,563.54	67,938.28	0.00%	0.00%
27	SALARIES AND WAGES	1--	4,356,765.00	4,356,765.00	363,273.35	704,578.33	16.17%	16.45%
27	EMPLOYEE BENEFITS	2--	2,217,425.00	2,217,425.00	192,925.56	398,769.39	17.98%	15.37%
27	PURCHASED SERVICES	3--	1,159,251.00	1,159,251.00	125,262.00	177,348.04	15.30%	16.86%
27	NON-CAPITAL OBJECTS	4--	49,125.00	53,130.29	2,854.63	18,284.32	34.41%	45.35%
27	CAPITAL OBJECTS	5--	12,300.00	8,294.71	0.00	0.00	0.00%	9.60%
27	DUES/FEES/MISCL.	9--	13,975.00	13,975.00	863.00	1,407.00	10.07%	6.71%
27	SPECIAL ED. & RELATED SER	---	7,808,841.00	7,808,841.00	685,178.54	1,300,387.08	16.65%	16.38%
38	DEBT RETIREMENT	6--	0.00	0.00	0.00	0.00	0.00%	0.00%
38	NON-REFERENDUM DEBT SERVI	---	0.00	0.00	0.00	0.00	0.00%	0.00%
39	DEBT RETIREMENT	6--	3,232,122.00	3,232,122.00	0.00	62,187.50	1.92%	4.35%
39	REFERENDUM APPROVED DEBT	---	3,232,122.00	3,232,122.00	0.00	62,187.50	1.92%	4.35%
50	SALARIES AND WAGES	1--	394,430.00	394,430.00	33,557.08	69,155.94	17.53%	20.02%
50	EMPLOYEE BENEFITS	2--	173,928.00	173,928.00	10,965.85	26,685.06	15.34%	21.16%
50	PURCHASED SERVICES	3--	27,813.00	27,813.00	303.49	13,237.94	47.60%	20.57%
50	NON-CAPITAL OBJECTS	4--	583,353.00	583,353.00	34,882.92	90,546.55	15.52%	17.06%
50	CAPITAL OBJECTS	5--	8,045.00	8,045.00	0.00	5,737.00	71.31%	29.91%
50	DUES/FEES/MISCL.	9--	247.00	247.00	0.00	48.00	19.43%	1.97%
50	FOOD SERVICE FUND	---	1,187,816.00	1,187,816.00	79,709.34	205,410.49	17.29%	18.82%
72	DUES/FEES/MISCL.	9--	5,000.00	5,000.00	0.00	0.00	0.00%	????????

Fnd	Description	Object	2019-20	2019-20	October 2019-20	2019-20	2019-20	2018-19
			Original Budget	Revised Budget	Monthly Activity	FYTD Activity	FYTD%	FYTD%
72	EXPENDABLE TRUST FUND	---	5,000.00	5,000.00	0.00	0.00	0.00%	????????
73	DUES/FEES/MISCL.	9--	967,431.00	967,431.00	0.00	28,092.22	2.90%	2.10%
73	EMPLOYEE BENEFIT FUND	---	967,431.00	967,431.00	0.00	28,092.22	2.90%	2.10%
80	SALARIES AND WAGES	1--	19,450.00	19,450.00	1,781.29	4,329.33	22.26%	30.90%
80	EMPLOYEE BENEFITS	2--	2,250.00	2,250.00	139.87	284.46	12.64%	22.60%
80	PURCHASED SERVICES	3--	300.00	300.00	47.21	141.63	47.21%	44.15%
80	NON-CAPITAL OBJECTS	4--	0.00	0.00	0.00	0.00	0.00%	0.00%
80	CAPITAL OBJECTS	5--	0.00	0.00	0.00	0.00	0.00%	0.00%
80	DUES/FEES/MISCL.	9--	0.00	0.00	0.00	0.00	0.00%	0.00%
80	COMMUNITY SERVICE	---	22,000.00	22,000.00	1,968.37	4,755.42	21.62%	30.23%
95	SALARIES AND WAGES	1--	0.00	0.00	0.00	0.00	0.00%	0.00%
95	EMPLOYEE BENEFITS	2--	0.00	0.00	0.00	0.00	0.00%	0.00%
95	PURCHASED SERVICES	3--	4,945.00	4,945.00	193.00	896.00	18.12%	22.37%
95	NON-CAPITAL OBJECTS	4--	6,108.00	6,108.00	0.00	0.00	0.00%	0.00%
95	CAPITAL OBJECTS	5--	3,000.00	3,000.00	-344.00	-344.00	-11.47%	0.00%
95	INTERFUND TRANSFERS	8--	0.00	0.00	0.00	0.00	0.00%	0.00%
95	DUES/FEES/MISCL.	9--	200.00	200.00	0.00	0.00	0.00%	0.00%
95	COOP PROGRAMS-FISCAL AGEN	---	14,253.00	14,253.00	-151.00	552.00	3.87%	3.06%
Grand Expense Totals			51,171,622.00	51,171,622.00	4,189,316.72	10,332,050.02	20.19%	21.21%

Number of Accounts: 6823

***** End of report *****

<u>Fund</u>	<u>Description</u>	<u>October 2019-20 Ending Balance</u>	<u>Prior Month Ending Balance</u>	<u>2019-20 Beginning Balance</u>	<u>October 2018-19 Ending Balance</u>
10 -	GENERAL FUND	4,847,127.96CR	8,177,353.50CR	10,750,572.10CR	6,436,919.61CR
21 -	SPECIAL REVENUE TRUST FUND	38,704.26CR	49,155.18CR	40,442.29CR	93,696.60CR
22 -	DISTRICT ACTIVITY ACCOUNT	154,872.93CR	139,776.22CR	138,814.19CR	164,574.14CR
27 -	SPECIAL ED. & RELATED SERVICES	0.00	0.00	0.00	1,226,267.92
39 -	REFERENDUM APPROVED DEBT	1,263,574.27CR	1,261,971.91CR	1,318,116.47CR	486,011.65CR
46 -	LONG-TERM CAPITAL IMPROVEMENT	105.55CR	105.24CR	104.32CR	101.90CR
50 -	FOOD SERVICE FUND	10,744.73CR	4,700.92	16,064.35CR	62,742.62CR
72 -	EXPENDABLE TRUST FUND	3,716.44CR	3,716.28CR	3,715.80CR	2,714.61CR
73 -	EMPLOYEE BENEFIT FUND	611,758.12CR	611,758.12CR	609,435.04CR	538,526.70CR
80 -	COMMUNITY SERVICE	73,047.39CR	75,015.76CR	70,470.61CR	73,304.82CR
95 -	COOP PROGRAMS-FISCAL AGENT	552.00	703.00	0.00	1,047.00
Grand Equity Totals		7,003,099.65CR	10,313,448.29CR	12,947,735.17CR	6,631,277.73CR

Number of Accounts: 80

***** End of report *****



OPERATING BALANCES

As of the Beginning of	2010-11	2011-12	2012-13	2013-14	2014-15	2015-16	2016-17	2017-18	2018-19	2019-20
July	8,963,966* 3,167,397	7,672,138* 2,078,738	8,210,832* 2,664,052	8,503,447* 3,113,680	8,203,471* 2,400,922	10,094,315* 4,142,253	10,260,150* 4,685,141	10,413,580* 4,509,646	11,025,230* 5,826,182	10,734,309* 5,157,507
August	7,737,643* 2,382,811	6,372,621* 1,168,160	6,964,053* 2,022,975	7,237,327* 2,276,683	7,116,395* 2,007,259	8,997,234* 3,632,218	9,291,068* 3,755,045	9,385,499* 3,873,906	10,059,625* 5,250,764	9,722,469* 4,557,817
September	3,818,034* 3,270,050	5,613,506* 5,377,449	6,065,183* 6,024,598	6,413,148* 6,178,759	6,209,669* 5,953,967	8,059,281* 7,031,551	8,234,558* 7,131,755	8,205,214* 7,099,597	8,792,661* 8,658,962	8,511,827* 8,437,807
October	3,460,948	5,464,497	5,691,967	6,112,243* 5,881,924	5,997,468* 5,995,718	7,707,894	7,800,229* 7,430,608	8,163,756* 7,595,748	8,280,378* 8,267,181	8,177,354* 8,103,333
November	780,624	2,772,014	2,926,856	3,232,462* 3,230,712	3,062,779	4,704,048	5,028,788* 5,027,682	4,942,381* 4,870,413	5,210,652* 5,197,795	4,847,128* 4,855,816
December	-1,483,465	738,522	751,018	752,773* 751,023	702,790	2,101,242	2,332,999* 2,332,285	2,394,420* 2,334,208	1,440,719* 1,428,373	
January	280,671	1,896,221	2,601,119	2,520,599* 2,518,849	2,489,225	3,408,486	3,829,485	3,110,264* 3,050,051	2,985,471* 2,973,464	
February	4,480,544	5,143,585	5,386,880	4,618,991* 4,617,241	6,117,210	6,784,263	7,248,890	6,708,317* 6,637,409	5,553,770* 5,541,870	
March	3,862,423	5,237,472	5,086,114	8,107,320* 8,105,570	5,723,509	7,175,725	9,501,500	8,206,576* 8,136,028	7,323,391* 7,311,511	
April	5,397,961	6,421,898	6,622,516	6,294,210* 6,292,460	7,847,164	8,575,469	8,879,963	11,065,972* 10,995,784	10,804,125* 10,792,245	
May	3,264,121	4,469,268	4,575,381	4,118,620* 4,116,870	5,725,083	6,324,097	6,767,918	8,887,656* 8,817,727	8,770,139* 8,762,659	
June	825,009	1,979,589	1,798,752	1,641,031* 1,639,281	3,071,575	3,695,573	4,027,810	6,307,982* 6,298,576	4,916,641* 4,909,201	

* These numbers include receivables (I.O.U.'s) – money that is owed to the School District but was not received as of indicated point in time. In some cases it was relatively easy to also determine the balance on a cash basis, so both are shown.



CASH AND INVESTMENTS REPORT

As of the End of October, 2019

	<u>End of Current Month</u>	<u>End of Prior Month</u>
<u>Checking Accounts</u>		
General - PremierBank (145816)	\$ 650,000.00	\$ 650,000.00
<u>Repurchase Agreements (Sweep Accounts)</u>		
General - PremierBank (1458161)	\$ 4,516,387.20	\$ 7,720,797.05
Referendum Debt - PremierBank (1458241)	\$ 1,263,574.27	\$ 1,261,971.91
<u>Other Cash & Investment Accounts</u>		
Local Government Investment Pool (LGIP)	\$ -	\$ -
Wisconsin Investment Series Cooperative (WISC)	\$ 105.55	\$ 105.24
TOTAL CASH AND INVESTMENTS	\$ 6,430,067.02	\$ 9,632,874.20

<u>VENDOR</u>	<u>AMOUNT</u>
ABBOTT, ROBERT	298.85
ABENDROTH WATER COND	1,058.96
ACCURACE TIMING SERI	850.00
ACT	9,691.00
ADAMS BOOK CO.	1,173.53
ADVANCED DISPOSAL SO	4,693.86
AGNEW, JEFFREY	100.00
AIRGAS USA, LLC	170.64
AKPOGUMA, ANDREW	100.00
ALDO LEOPOLD NATURE	350.00
ALPHA BAKING CO	80.06
AMAZON CAPITAL SERVI	1,629.77
AMERICAN AWARDS AND	555.90
AMERICAN FUNDS	12,829.60
AMERICAN TIME	291.94
AMERICOLLECT, INC	395.95
AMERIPRISE FINANCIAL	550.00
ANDREWS, HOLLY	115.11
AT&T BUSINESS SERVIC	39.29
AXA EQUITABLE	10,416.00
BADGER PRESS INC.	3,595.84
BADGER SPORTING GOOD	2,691.63
BADGER WELDING	16.30
BARGANZ, STACCI	30.00
BERG, NATHAN	65.00
BERNARD FOOD	1,279.93
BETTY BRINN CHILDREN	265.00
BICYCLEWISE & SPORTS	514.00
BLACKHAWK CATERING	36.00
BLACKHAWK FITNESS	198.00
BLUEFIRE ARTS	450.00
BOSCH, BRIAN	100.00
BOYLE, AARON	49.46
BRANAMAN, MARIE ANNE	50.00
BRAUN THUSSENKRUPP	954.00
BRETL, LAUREN	121.66
BREYER, RACHAEL	4.64
BROOKFIELD EAST DEBA	150.00
BUILDERS FIRST SOURC	58.18
BURLINGTON AREA SCHO	300.00
BUTZEN, JODY	100.00
BYRD, JAMES	65.00
CALLAWAY, WILLIAM	275.00
CARD SERVICE CENTER	23,676.97
CARNEGIE LEARNING	1,316.70
CARRICO AQUATIC RESO	555.18
CASSIDY, TAYLOR	31.90
CBIZ VALUATION GROUP	480.00
CBRE INC.	1,254.00
CENGAGE LEARNING, IN	754.00
CENTERPOINT ENERGY	2,377.70
CESA 2	18,929.49
CHARTER COMMUNICATIO	129.64
CITY OF FT ATKINSON	5,922.63
CREAM CITY	29.90
CRISIS PREVENTION IN	300.00

<u>VENDOR</u>	<u>AMOUNT</u>
CURRICULUM ASSOC. IN	133.56
DAILY JEFFERSON COUN	540.63
DALY, CATHY	35.00
DANIELS CONSTRUCTION	59,449.00
DEAN HEALTH PLAN	543,951.35
DEFOREST HIGH SCHOOL	125.00
DELTA DENTAL	33,949.35
DELTA EDUCATION*	69.53
DEMCO, INC.	6,954.39
DEMERATH, JASON	148.48
DEPT OF PUBLIC INSTR	180.00
DEPT. OF SAFETY & PR	100.00
DEVALK, TAYLOR	65.00
DEY, LORI	60.00
DICK BLICK ART MATER	315.45
DOUBLE 3 TRANSPORTAT	105,358.52
DUNCAN, KEVIN	1,489.90
ECOLAB	190.65
ELSMORE SWIM SHOP-BR	350.42
EMPLOYEE BENEFITS CO	97,527.61
ENGER, BRANDY	88.56
ENGINEERED SECURITY	1,181.66
EPES C.A.P. INC.	200.00
FASSP	100.00
FESTIVAL FOODS	1,176.28
FIDELITEC, LLC	162.30
FIDELITY INVESTMENTS	5,314.04
FLICK, DENNIS	195.00
FLINN SCIENTIFIC, IN	26.39
FOLLETT SCHOOL SOLUT	1,771.26
FORT ATKINSON HIGH S	150.53
FORT ATKINSON PRESCH	38,481.50
FORT ATKINSON WATER	2,567.54
FORT HEALTH CARE	47,920.20
FORT HEALTHCARE	2,483.00
FORT HEALTHCARE BUSI	681.00
FRANKSON, DAVID	100.00
GAIL MCINNIS PRODUCT	8,276.00
GAPPA SECURITY SOLUT	1,992.40
GEFVERT, BRADLEY	100.00
GEO. R. BREBER MUSIC	1,647.66
GILLE, NANCY	100.00
GILMORE, JUSTIN	65.00
GLADEM, ANN	82.52
GLYNN, JAMES	2,855.00
GODFREY & KAHN, SC	124.00
GORDON FOOD SERVICE,	16,781.37
GOV'T FINANCE OFFICE	1,200.00
GOYER ACE FORT	1,001.18
GRAINGER	77.80
GREAT-WEST RETIREMEN	2,530.00
GRIMM BOOK BINDERY C	364.34
GYM BOYS LLC	125.00
H&H FIRE PROTECTION,	227.00
HAPFELDER, ANDREA	39.00
HALL, MICHELLE	179.91

<u>VENDOR</u>	<u>AMOUNT</u>
HALVORSEN, DANIEL	48.72
HANSEN, DANIEL	630.99
HAWKER, PATRICK	65.00
HIGH SCHOOL KINS ACC	5.00
HOLMQUIST, KENT	65.00
HORWATH, SARAH	50.38
HRYCAY, STEVEN	195.00
HUMPHREY FLORAL & GI	0.00
IDENTIFIX	890.00
INTEGRATED COMPREHEN	5,220.60
INTEGRATED SYSTEMS C	675.00
IRS	385,694.50
J.W. PEPPER & SON, I	885.94
JAMESON, DAVE	65.00
JEFFERSON COUNTY HEA	46,422.50
JIM CARTS & PARTS, L	275.00
JM CARPETS	131.88
JOHNSTONE SUPPLY	1,211.86
JONAS OFFICE PRODUCT	5,546.54
JUNIOR LIBRARY GUILD	1,514.90
KANTERS, LINDSEY	30.00
KAPLAN EARLY LEARNIN	442.84
KEMPS LLC	6,048.06
KETTLE MORAINE	50.00
KIDS KONNECTION	14,618.50
KING, TERRY	65.00
KMOCH, JOE	25.00
KNAPTON MUSIK KNOTES	577.95
KOMPAS CARE	1,268.75
KOPPS, DEBRA	116.55
KUNES COUNTRY FORD L	52,399.00
KWIK TRIP	500.00
LAKELAND CHEMICAL	753.90
LAKESHORE	111.55
LEIBMAN, JOSEPH	624.98
LEMKE FENCE OF JEFFE	2,136.00
LINCOLN ELECTRIC	859.51
LINDE, DANA	89.76
LOGO WORKS, INC.	155.50
LRP PUBLICATIONS	264.50
LUCHT, JOHN	185.00
LUKES, ROBBIE	130.00
LUTHER ELEMENTARY KI	15.00
LUTHER ELEMENTARY SC	255.41
MACKIN EDUCATIONAL R	1,222.22
MADISON COLLEGE	4,670.92
MADISON NATIONAL LIF	10,870.52
MADISON OPERA	480.00
MAGALSKI, EDWARD	100.00
MAHONEY, STEVEN	125.28
MANLICK, COREY	65.00
MARK'S PLUMBING PART	617.52
MAROWSKY, MEAGAN	85.28
MARQUETTE UNIVERSITY	60.00
MARTY, CATHLEEN	245.00
MC NAUGHTON, DONALD	185.00

<u>VENDOR</u>	<u>AMOUNT</u>
MCDONALD, GINA	300.00
MCFL	50.00
MCINTYRE, KATHERINE	25.55
MEINHOLZ, ALEXANDER	65.00
MEISTER, GARRY	245.00
MELENDEZ, STEVEN	130.00
MENARDS*	2,436.98
MERRILL, JAMES	220.00
MESSERLI & KRAMER PA	318.03
MEYER, RORY	100.00
MIDDLE SCHOOL KINS A	5.00
MILLIGAN, MARK	195.00
MILTON CHOIR PARENTS	600.00
MILTON HIGH SCHOOL	20.00
MILWAUKEE DEBATE LEA	105.00
MILWAUKEE PUBLIC SCH	300.00
MUSIC THERAPY SERVIC	70.00
MY PAYMENT NETWORK	411.20
NASCO	7,894.36
NASSCO INC.	5,192.77
NAT'L SPEECH & DEBAT	180.00
NEIGER, ZACHERY	131.74
NELCO	456.70
NIELSEN, KIMBERLY	10.00
NOLDEN, ROBERT	65.00
O'REILLY AUTO PARTS	37.25
OCONOMOWOC DEVELOPME	16,698.20
OFFICE DEPOT	353.52
OPPENHEIMER FUNDS	350.00
OPPORTUNITIES INC.	1,517.25
OPTIMIST CLUB OF	70.00
OSCAR, DEAN	65.00
OVERTURE CENTER FOR	250.00
PACHAL, JOSEPH	65.00
PAN-O-GOLD BAKING CO	2,105.26
PAOLI CLAY CO, INC.	1,510.00
PARENTS COOPERATIVE	23,923.00
PARK SEED WHOLESAL	35.44
PEARSON EDUCATION	106.84
PEPLINSKI, TIM	75.00
PEPSI COLA COMPANY	1,800.68
PER MAR SECURITY SER	256.32
PERFORMANCE FOODSERV	1,163.61
PHIL'S ELECTRIC DRAI	540.00
PIONEER REVERE	155.00
PIZZA HUT	457.50
PRICE, AARON	100.00
PRO3 SOLUTIONS	320.00
PURDY ELEMENTARY KIN	5.00
QUADE, STEVEN	225.00
QUILL CORPORATION	725.94
RACINE DANISH KRINGL	4,597.00
READY ELECTRIC, INC.	10,524.00
REALLY GOOD STUFF, L	186.04
REINDERS BROTHERS IN	451.50
REINHART FOODSERVICE	2,871.19

<u>VENDOR</u>	<u>AMOUNT</u>
RELIABLE AUTO REPAIR	121.70
RHYME	5,475.14
RICHARD S HOYERMAN,	278.30
RICHTER, JASON	65.00
RINDERLE DOOR CO.	4,010.38
RM SMALL ENGINE	67.47
ROCKWELL ELEMENTARY	20.00
RODRIGUEZ III, MARIO	1,088.11
ROTH, JOHN	100.00
ROUNDY'S INC CUSTMER	1,909.21
RUFUS KING HIGH SCHO	105.00
RUSSELL, CHARLES	225.00
SADILEK, FRANK	145.00
SALT SOFTWARE, LLC	43.17
SAYRE, CANDICE	165.88
SCHMIDT, AMY	16.00
SCHOLASTIC INC.	423.59
SCHOOL OUTFITTERS.CO	1,942.97
SCHOOL SPECIALTY, IN	1,637.91
SCHWEIGERT, SHAUN	227.00
SEHEMM, JEFFREY	400.00
SEILS, ANDREW	65.00
SFM	39,042.00
SKYWARD, INC.	400.00
SOUTHERN LAKES ADVAN	120.00
SQUIRES, CLARA	58.25
ST. JOSEPH CATHOLIC	9,314.50
STACHOWIAK, TIMOTHY	135.00
STAGE RIGHT CORP.	10,499.24
STATE OF WI-DEPT OF	919.56
STOUGHTONBOROUGH, MI	1,631.91
STRANG, PATTESON, RE	148.00
SULLIVAN, KIMBERLY	140.99
SWITS LTD.	472.50
SYKES, MARK	2,250.00
SYNCB/AMAZON	5,747.87
TATE, JESSICA	332.92
TEACHERS ON CALL	26,065.44
THE COLLEGE BOARD	235.00
THE MIDWEST CLINIC	130.00
THE RICHARDSON SCHOO	8,836.00
THERAPRO, INC.	129.80
THERIAULT, MICHAEL	97.58
THIELE, ANGELA	700.00
THRIVENT MUTUAL FUND	250.00
TIMBER-LEE	1,045.50
TIME WARNER CABLE	79.98
TJK WOLF PRODUCTIONS	720.00
TOLEDO PHYSICAL EDUC	890.77
TOTAL ENERGY SYSTEMS	7,238.02
TOTAL FUNDS	2,000.00
TRANE US, INC.	10,638.00
TRESONA MULTIMEDIA L	1,930.00
UNEMPLOYMENT INSURAN	1,878.15
UNITED WAY	227.00
UTPHALL, KATHARINE	145.38

<u>VENDOR</u>	<u>AMOUNT</u>
UW-WHITEWATER	261.00
UW-WHITEWATER*	199.00
VEOLIA ENVIRONMENTAL	1,247.85
VERIZON WIRELESS	1,315.17
VOSS, TODD	100.00
WALKER, JEFF	65.00
WARD, TANNA	150.00
WARREN, MICHAEL	100.00
WARREN, TIFFANY	100.00
WASPA	-300.00
WE ENERGIES	55,462.38
WEA MEMBER BENEFITS	12,922.30
WEBB & GERRITSEN INC	1,794.24
WEGNER, HEIDI	156.60
WEIDENFELLER, MARISS	119.40
WEX BANK	7,931.89
WI COUNCIL FOR EXCEP	105.00
WI DEPT OF REVENUE	75,215.61
WI PCL SATELLITE CEN	8,780.00
WI RETIREMENT FUND B	218,435.75
WI SCTF	65.00
WI SKYWARD USER GROU	200.00
WI-SCTF	838.76
WIESE, ALEXA	119.25
WILDE, RODNEY	50.00
WILLIAM V MACGILL &	454.54
WILLKOMM, GEOFF	225.00
WILS	3,019.29
WISCONSIN FUTURE PRO	310.00
WITESOL	168.78
YODER, KATHLEEN	41.31
YOUTH FRONTIERS	2,545.00

2,290,169.98 Totals for checks

FUND SUMMARY

<u>FUND</u>	<u>DESCRIPTION</u>	<u>BALANCE SHEET</u>	<u>REVENUE</u>	<u>EXPENSE</u>	<u>TOTAL</u>
10	GENERAL FUND	1,278,686.29	110.00	792,827.87	2,071,624.16
21	SPECIAL REVENUE TRUST FUND	0.00	0.00	11,325.92	11,325.92
22	DISTRICT ACTIVITY ACCOUNT	0.00	300.00	24,054.10	24,354.10
27	SPECIAL ED. & RELATED SERVICES	0.00	0.00	145,520.93	145,520.93
50	FOOD SERVICE FUND	0.00	118.25	36,986.41	37,104.66
80	COMMUNITY SERVICE	0.00	0.00	47.21	47.21
95	COOP PROGRAMS-FISCAL AGENT	0.00	0.00	193.00	193.00
***	Fund Summary Totals ***	1,278,686.29	528.25	1,010,955.44	2,290,169.98

***** End of report *****